



Eastern Apicultural Society EAS JOURNAL

You Don't Want To Miss This One!

I extend a warm and friendly invitation and encourage YOU to attend this 46th annual conference of the Eastern Apicultural Society of North America, Inc. EAS was established in 1955 with the purpose of promoting honey bee culture, the education of beekeepers, and excellence in bee research. Every summer, EAS conducts its annual conference in one of its 26 member States and Provinces. Approximately 500 people, from around the world, attend these conferences every year. **This** year's annual Short Course and Conference will be held during the **week of August 6-10** at the **Massachusetts Maritime Academy (MMA)**, in Buzzards Bay, MA. The MMA is a lovely campus situated on a small peninsula surrounded by scenic Cape Cod Canal, Buzzards Bay and Buttermilk Bay.

Our year 2001 beekeeping Short Course, Symposia, and Workshops promise to be **jam-packed** with **EXCELLENT** speakers and instructors—with extensive knowledge and experience in a wide range of disciplines directly and indirectly related to beekeeping. Whether you wish to expand your hobby into a sideline business, learn more about honey bee pests and diseases, rethink your seasonal management, investigate IPM, consider alternative pollinators, freshen up your marketing approach, look into commercial pollination possibilities, or just learn how to be a better bee **KEEPER** . . . **EAS 2001 - Bees by the Sea** is the place to be this summer!

Everyone on the EAS 2001 team has worked very hard to bring you a fantastic collection of experiences and opportunities designed to make our week together spectacular. Now, the only thing missing . . . is YOU. Everything you need to register for the Short Course and/or Conference, tours, excursions, meals and on-campus lodging is in this issue of the *EAS Spring Journal*. Register **EARLY!** Accommodations will fill up quickly. Sharing rooms on-campus is encouraged as dorm space is limited.

See YOU there!

— Jay Barthelmeus, President

Volunteers Needed

No EAS Conference is a success without the help of many **VOLUNTEERS**. Whether you prefer assisting the Short Course, Main Conference, Workshops, Commercial Vendors, Registration, Honey Show or Auctions, many hands makes the task far easier. YOU define the amount of time you're comfortable donating to EAS 2001. We'll match you up with the perfect job. Please contact our friendly and knowledgeable Volunteer Coordinator: George Muhlebach, P.O. Box 350, Barnstable, MA 02630, 508.362.8693. Email: gmuhlebach@capecod.net

Make Your Plans Early

As you register for EAS 2001 . . .

Please remember that this year we are facing deadlines with the campus that are significantly earlier than for past EAS conferences. The sooner you can fill out your registration form and return it to your registrars, the more likely you are to get what you've registered for. We will be making an effort to accommodate as many people for as many different facets of this conference as possible, and you can make it easier by registering early! If you have any questions, need additional registration forms, or need help deciphering the form you already have: You may either check our website <http://www.capecod.com/bcba/eas2001.html> OR please feel free to contact your Registrars. Jan Gaglione can be reached at 978.535.1622 (Crystal Bee Supply), jgagli1646@aol.com. Kathy Hough can be reached at 978.468.6000 (Red Maple Farm) or beesbest@mediaone.net.

Things To Do At EAS 2001

Cape Cod Canal, Historical Narration and Blues Cruise,

Wednesday Evening – Depart from MMA Pier aboard the *M/V Viking*. Narrated history of canal development and historical sites along the way. *Blues Alley* will entertain on return trip.

Whale Watch, *Wednesday* – Board the *Onset Chief II* in the morning for an all-day excursion to see these "giants of the sea."

Deep-Sea Fishing, *Tuesday, Thursday, Friday* – A six-hour trip aboard the *Onset Chief II*. Equipment provided.

Mayflower II/Plymouth Wax Museum, *Tuesday, Thursday* – See Plymouth Rock and tour the replica of the Mayflower. Visit the Wax Museum for a bit of puritanical history.

Cranberry World/Plymouth Colony Winery,

Tuesday, Thursday – Self-guided tour of Cranberry World, a museum of sorts with diaramas, photos and history of the cranberry. Also visit a working cranberry bog and winery.

Kennedy Museum/Christmas Tree Shop, Friday –

A must for history fans, visit the JFK Museum and shop for bargains at the Christmas Shop.

Spring 2001

What's Inside

- A Word From The Chairman
- Your 2001 Registration Form
- More On EAS 2001 - Cape Cod
- Maps, Hotels, Directions, and more!

A Word From Our Chairman . . .

Register early. Register early. Register early. Don't delay. Don't forget. The cut off date for this year's Conference is a bit earlier than in year's past, and if you wait too long it will be too late to get into the Exceptional Short Course, to take advantage of all the tours, to get into a dorm, to get the lobster, to help at the auction, to enjoy the speakers at the conference, to get into one of the many workshops, and to enjoy Bees By The Sea. Register early. Register early. And don't forget.

The next few years are shaping up as far as locations are concerned. In 2002 we travel to Ithaca, New York, with Mike Griggs and his crew to take advantage of the brand new meeting facilities there, to visit Dyce Lab, and to see the incredible collection of ancient bee books at the Mann Library there. It will be a show and a half. In 2003 it's north to Maine and all that fine state, and fine group of people led by Rick Cooper have promised. Easy to get to, and close to everything fun and interesting in that fine state, the meeting is shaping up and we'll get to visit ship building yards, museums and maybe best of all...L.L. Bean.

2004 may see us going to Connecticut, but it may also see us heading for North Carolina. Both states have expressed an interest in hosting a Conference there. No doubt it will be interesting in either location. I can't wait to see who makes it work. 2005 will bring us back to Ohio for another Year Of The Hive. If you made it to the 1995 meeting there you'll recall that there was more beekeeping in one week than most of us get in a couple of years. Jim Tew, Dave Heilman, a host of Master Beekeepers and volunteers and President Kathy Summers (the EAS Journal Editor) are already putting together another knock-your-socks-off program

to take place completely on the Wooster Campus (all air conditioned, by the way). Now, who's on deck for 2006?

An interesting situation came up at the last Board meeting when, after a bit of discovery, it was noted that we have gotten off our Director's Election schedule. The Board is supposed to have a quarter of its members go off the Board each year, no more. This is for continuity's sake. We've gotten away from that for various reasons, but over the next couple of years want to get back to when who goes off is correct. To accommodate this we may have to modify some Director's terms for a single term. We won't short change anybody, and we may extend a term or two to make it work. But we will be back on schedule in a couple of years.

The Board is seriously looking at using Credit Cards for registration next year as a convenience for both our registration people and for those attending. We are getting into the modern age after all I guess.

One more thing. Does your association belong to EAS? Probably not. Not many do. Years ago we had a strong contingent of association members....called Delegates....at each meeting. Over the years this group has waxed and waned, and is now fairly small. I urge you to have your association join and to be a part of EAS. And to elect and send a delegate to the meeting this summer. Contact Loretta on dues and how to become a delegate. You can play a bigger part in how EAS runs by becoming one. And yes, our Delegate group is going to be playing a much larger role in the very near future.

So. Register early and come and enjoy Bees By The Sea in August! See you there! - *Kim Flottum, Chairman*

Looking Ahead

2002 – August 4 -10

New York

Cornell University, Ithaca

2003 – July 30 - August 4

Maine

Bowdoin College Campus, Brunswick

**2004 – Dates to be determined
Connecticut or North Carolina**

What about your state?

Has EAS been to your state in the last 10 years? Has EAS ever been to your state?

We have locations up to 2005, but beyond that we're still looking. If you have a strong state group or even several local groups, it can be done in your state. It's a lot of work, but it's a lot of fun too.

Consider this opportunity. Talk to your State Association leaders and take the opportunity of letting your state be the host of EAS.

Get in touch with Kim Flottum, Chairman for details.

EAS Journal

Journal of the Eastern Apicultural
Society of North America, Inc.
Volume 29, Number 2

Kim Flottum

Chairman of the Board
7011 Spieth Road
Medina, OH 44256
330.722.2021 (h)
330.725.6677, Ext. 3214
kim@airoot.com

Ann Harman

Vice Chairman of the Board
1214 North Poes Road
Flint Hill, VA 22627
540.364.4660 (phone & fax)
AHworkerB@aol.com

Jay Barthelmeus

President
7 McElway Drive
Harwich, MA 02645-2445
508.430.2740
capebees@capecod.net

Mike Griggs

2002 President
179 Benjamin Hill Rd.
Newfield, NY 14867
607.564.0656
607.255.1132 (fax)
mhg3@cornell.edu

David Bernard

2000 President
26626 Howard Chapel Road
Damascus, MD 20872
301.414.2317
amazingbee@earthlink.net

Loretta Surprenant

Secretary
Box 300
Essex, NY 12936
518.963.7593 (phone & fax)

Donald Chirnside

Treasurer
99 Weavers Road
North Kingstown, RI 02852-7135
401.295.9334

Master Beekeeper Hive Notes

Early spring finds most of the Master Beekeepers dealing with beekeepers, more than bees. It is the time when we need to teach beekeeping and bring to the public the knowledge we have acquired as Master Beekeepers. As the seasons move on and our efforts produce more educated "beekeepers," we have fulfilled part of our commitment to beekeeping and our place as Master Beekeepers.

I would like to thank all of you who returned the survey that was sent last October. From these, the Master Beekeeper Committee has gleaned that you wish to maintain our high standards. Some of you have expressed interest in instituting a next level of Master Beekeepers through service and education. A detailed plan will be mailed to you in May so that all Master Beekeepers will have a say on this issue. Voting on a step level program will occur during the Master Beekeepers' meeting at EAS 2001. Those not attending EAS 2001 will have time (May to July) to express their opinions on these issues and may cast their votes by mail prior to the meeting. Details will be mailed in May.

Anyone wishing to take the Mas-

ter Beekeeper exam at EAS 2001, may request an application from Loretta Surprenant after March 1. You will note on the application that they are due the same day as the registration forms are due for the EAS 2001 conference. If you are planning on taking the exam, you may wish to get your letter of recommendation early, since the applications will be due earlier than in previous years. Please obtain a letter of recommendation from a person that is familiar with your beekeeping operation. This could be your regional apiary inspector, an EAS Master Beekeeper who has worked with you, or an instructor of beekeeping with whom you have studied. The details are all in the packet that will be sent from Loretta. Her address can be found in the front of this Journal.

The Master Beekeeper Organization needs the support of all the Master Beekeepers to move ahead. It will be an interesting journey as we take our group to the top of the beekeeping fraternity, moving into beekeeping's future with new standards and challenges.

- Nancy Troup

EAS Certified Master Beekeeper

What Is The Job Of . . .

An EAS Director?

Each state/province is entitled to elect one Director on the governing board of the Society. Directors meet before and after each general meeting and set policy and guidelines for the operation of the business of the Society. Throughout the year, they serve as the liaison between the Society officers and the members in their respective states. They are responsible for recruiting new members, keeping track of state concerns and advising the membership of their activities through the EAS Journal which is published four times a year.

An EAS Delegate?

Each member association in good standing shall be entitled to send one official delegate to each annual conference. A delegate acts on behalf of their local and/or state association by voicing the concerns and recommendations of their respective association. Recommendations that require action by the Board of Directors must be placed in written form to be voted on by the assembled delegates. The President will then report approved motions to the Board of Directors at the next scheduled board meeting. Action taken by the board will be reported to the delegates at the next regularly scheduled delegate's meeting.

B & K Books of *Hay-on-Wye*

The international centre for used books



We offer a unique service to private and institutional collectors. At any time we stock 500 antiquarian and unusual used apicultural titles.

Current catalogue on request

Betty and Karl Showler

B & K Books
Newport Street
Hay-on-Wye
via Hereford, HR3 5BG U.K.
from USA 011-44-1497-820386

Weaver's BUCKFAST

Queens

Are best for the Northeast

www.rweaver.com

The R Weaver Apiaries, Inc.
16495 C.R. 319
Navasota, TX 77868

Phone: 936.825.2333

FAX: 936.825.3642

E-mail: rweaver@tca.net

Let
Mann Lake Ltd.
BEE Your
Key To Feed
&
Medications



**Mite-A-Thol® control
up to 97% efficacy against
Tracheal Mites.**



CheckMite+
BEE HIVE PEST CONTROL STRIP

CheckMite+™ Bee Hive Pest Control Strips
provide protection against Varroa Mites and the
Small Hive Beetle.

CheckMite+™ is approved for use in most states. Prior to
ordering please check with your local Department of Agriculture
or phone Mann Lake Ltd. at 800-880-7694 to determine the
status of the Section 18 in your state.

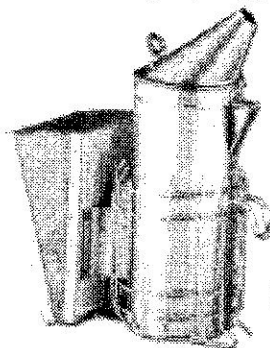
**Need More Information?
Call us today at
1-800-880-7694**

Mann Lake Ltd.
501 S. 1st St
Hackensack, MN 56452-2001
Email: beekeeper@mannlakeltd.com
Fax: 218-675-6156 www.mannlakeltd.com

TERRA-PRO is a
medicated pre-mix that
aids in for the prevention
of American and
European Foulbrood.



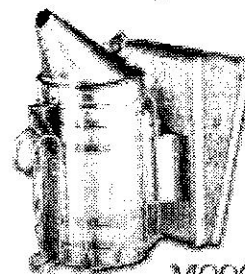
World's Best Bee Smokers Made in the U.S.A.



M00928 4x10 Stainless Steel
Smoker with Shield \$32.00

M00928

M00927 4x7 Stainless Steel
Smoker with Shield. \$29.99



M00927

"The Ultimate in Protection"

Dadant Zipper Veil Suits

Dadant

Call Toll-Free!

Waverly, NY 1-877-532-3268
Lynchburg, VA 1-800-220-8325
or order on-line: www.dadant.com

M01103	Small (36-38)	} \$56.75 Ea.
M01105	Medium (40-42)	
M01107	Large (44-46)	
M01203	X-Large (48-50)	
M01203X	XX-Large (52-54)	\$59.95 Ea.

M011381 Small
M011371 Medium
M011351 Large
M011351 X-Large



Ventilated Leather Gloves
Only \$13.50 Ea.

A Glance AT EAS 2001

The Team - EAS 2001 - Bees by the Sea



Massachusetts Maritime Academy
Buzzards Bay, Cape Cod, MA

how It Works

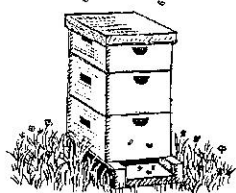
The **Short Course** starts early Monday morning (August 6th) and finishes up for lunch on Wednesday (August 8th).

The **Conference**, consisting of the Symposia and Workshops, runs from early-Wednesday afternoon (August 8th) and culminates with the Friday evening Banquet (August 10th).

The **Main Conference** takes place Wednesday afternoon, Thursday morning and Friday morning.

The **Workshops** utilize many different facilities and locations including the Apiary and take place Thursday afternoon and Friday afternoon.

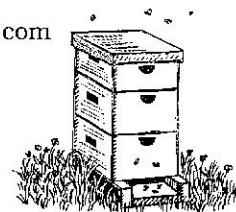
Commercial Vendors and Exhibitors will be set up in an enormous tent (40' x 200') on the parade grounds. We will also have an extensive working apiary essential to both the Short Course and Workshop programs located on the MMA baseball field.



SPONSORS & VENDORS

Our sponsors so far for EAS 2001 are, at the Platinum Level - Mann Lake Ltd. and Rossman Apiaries; at the Gold level - Brushy Mountain, Dadant, Gamber, Wellmark/Zoecon, and Betterbee. Returning Silver sponsors will be Walter T. Kelley Co. and Red Maple Farm. We hope you come to the EAS 2001 Short Course and Conference to meet, visit with and purchase from our sponsors as well as the numerous other vendors. If you are or know someone who is interested in participating as a vendor at EAS 2001, please contact Kathy Hough at 978.468.6000 (Red Maple Farm) or beesbest@mediaone.net.

Jay Barthelmeus, President, and Publicity Coordinator
508.430.2740; capebees@mediaone.net
Dewey M. Caron, Short Course Coordinator
302.831.8883; dmcaron@mindspring.com
Claire Desilets, Workshops Coordinator
508.888.2304; beekeeper@gis.net
Paul Desilets, Vice President, and Tours & Excursions
508.888.2304; beekeeper@gis.net
Jan Gaglione, Co-Registrar, and SC Level I Supervisor
978.535.1622; JGAGLI1646@aol.com
Vin Gaglione, SC Level I Supervisor
978.535.1622; JGAGLI1646@aol.com
Holly Groelle, Symposia Coordinator
781.934.5500; groelle@banet.net
Kathy Hough, Commercial Vendors, and Co-Registrar
978.468.6000; beesbest@mediaone.net
Rick Hough, Webmaster
978.468.6000; beesbest@mediaone.net
Geoffrey Lenk, Treasurer
508.888.1326; glenk@cape.com
Andy Morris, Apiary Supervisor
508.362.7448; jmorris1@gis.net
George Muhlebach, Volunteer Coordinator
508.362.8693; gmuhlebach@capecod.net
Audrey Osborn, Auctions Coordinator
508.430.5329; caperose@mediaone.net
Augustus Skarnarycz, Competitive Show
978.251.3987; pegasus@ma.ultranet.com



Live Music? You'll have it!

Wednesday evening, during our traditional **Wednesday Evening Social**, you will be treated to the **The Monomoy Seven!** A traditional Jazz Band . . . at it's best! **Featuring World Famous Jimmy Mazzy on banjo/vocals!** And, including: Robin Verdier—keyboard, Jeff Hughes—cornet, Paul Meymaris—clarinet, Charlie Tourgee—trombone, Al Bernard—tuba, and Art Burns—drums.

Thursday evening, during the **Traditional New England Lobster Boil**, and before the EASFHBR Auction, you will be entertained by: **The Hyannis Sound!** A ten-member Live, All-Natural A Cappella male vocal group. **Entertaining the living daylights out of New England since 1994.™**

You may visit their website at: <http://www.hyannisound.com>

Friday evening, for your listening and dining pleasure, during the traditional **Friday Evening Banquet**, you will be delighted with the **keyboard magic** and background music of **Art Madeiros**, from New Bedford, MA.

2001 EAS BEEKEEPING SHORT COURSE

Levels I & II

The EAS 2001 Short Course will have a "Level I" course for novice beekeepers with minimal experience or training in bee management. All aspects of the care and management of honey bees will be taught by some of the finest beekeeping instructors in the country as well as Master Beekeepers from throughout the East. Organized by Dr. Dewey M. Caron of the University of Delaware, Level I classes will be highlighted by sessions on management and bee equipment by Dr. James Tew of Ohio State, Maryann Frazier of Penn State University and Dr. Jeff Pettis of the US Department of Agriculture in Beltsville, MD. State Apiarist Tony Jadczak of Maine will discuss controlling pests and Al Carl, Massachusetts State Apiary Inspector, will demonstrate how to detect and control pests in the apiary. Master Beekeepers Bob Cole from North Carolina, Ann Harman of Virginia, and Bill Troup of Maryland, as well as Massachusetts' own Vin and Jan Gaglione of Crystal Bee Supply will give their perspectives on how they have become successful beekeepers and will assist short course participants as they spend at least half a day with the bees and instructors in the EAS 2001 apiary.

The EAS 2001 Short Course will also have sessions for the more experienced beekeeper. The "Level II" Short Course will feature 6 courses to further the education of intermediate or more advanced level beekeepers. Registrants will select one course each day in their area of interest. Each course will be an intensive day of focus on a particular aspect of beekeeping that is designed to help the more experienced beekeeper improve their profit line/enjoyment of beekeeping. Workshops include the bee management details of overwintering for success, managing colonies for swarm control and how to produce maximum honey sur-

pluses as well as other concentrations on Integrated Pest Management (IPM) for the beekeeper, marketing, raising quality queen stock and how to manage bees for their pollination benefit and other products. The Level II Short Course will feature the best beekeepers and instructors of beekeeping from EAS. Participants will have a tough time choosing which sessions to attend. Students in Level II can look forward to lots of time in the apiary as well as plenty of hands-on experience.

The Wednesday morning joint session of EAS 2001 Short Course is designed to bring participants up-to-date with happenings in the bee colony. Dr Robert Danko of USDA Baton Rouge Bee Lab will discuss the status of evaluating queens for disease/mite resistance. Tony Jadczak, Apiary Inspector in Maine will cover the current large demand for quality bee colony rentals by the Blueberry growers of the Eastern U.S. Jeff Pettis of USDA Beltsville Maryland Bee Lab covers the small hive beetle and what is happening with research to mitigate the negative effects of this recently introduced bee pest. The Wednesday session also features Dr. Nicola Bradbear of the International Bee Research Association in England who will help explain how beekeepers in other parts of the world solve their pressing problems. Mike Griggs USDA Plant Protection Research Entomologist, next year's EAS President-elect will detail botany for beekeepers featuring what bees seek at flowers and how they make choices as to what flowers are visited.

There is something for everyone at EAS short course 2001. All levels of experience, from those individuals just starting to the more experienced beekeeper, will benefit. This is one Short Course you won't want to miss.

- Dewey Caron, Short Course Coordinator

Level I - Beekeeping Fundamentals

Jan/ Vin Gaglione- Supervisors

Monday

- 8:30-10:30 Bee Biology explained - Caron
The BEST apiary, bee hive, equipment, etc - panel of 3 (Cooper, Caron and V Gaglione)
- 10:30-12:00 **IN THE APIARY** - 3 repeatable demos (opening/examining, feeding syrup/drugs, assessing queen/honey stores) (Troup, Morris, Carl)
- 1:30-3:00 Management through the season (fall/winter) - Frazier
Management continued (spring/summer) -Van Engelsdorp
- 3:30-5:00 Everything you want to know about bee products! - Tew
LAB-Demos of honey handling (V. Gaglione)
- 7:00-9:00 **IN THE APIARY** - expanding w/ package bees (Cooper) + dividing (Gaglione) + nucs (Troup)
Q & A session

Tuesday

- 8:30-10:00 Handling pathogen problems - Sammataro
What to do about pests - Pettis
- 10:30-12:00 **IN THE LAB** - ID of pests, equipment, mystery insects/equipment/pests (Hopkins, Gaglione, Pettis)
- 1:30-3:00 Swarming biology - How to manage swarms to advantage - Caron
Solving problems with queens - Frazier
- 3:30-5:00 **IN THE APIARY** - 3 repeatable demos (the 3 minute colony examination, producing honey on the comb, looking for pests/pathogens) (Jadczak, Morris, Troup)

Wednesday

Joint program for all SC participants

Level II EAS Short Course

MONDAY – Choose One Session Each Day (see registration form)

IPM Supervisor	Marketing MB Supervisor	Management - South MB Supervisor
Dennis van Engelsdorp 8:30-10:00 IPM basics Sammataro, vanEngelsdorp	Ann Harman 8:30-10:00 Bee Products Harman, Frazier	Bob Cole 8:30-10:00 In the Apiary (3)* Cole, Troup, Hopkins
10:30-12:00 Diseases Shimanuki, Hopkins	10:30-12:00 Honey Handling Demo** Harman, Gaglione, Maxant	10:30-12:00 Wintering Cole, Frazier
1:30-3:00 In the Apiary (3)*** Hopkins, Carl, Sammataro	1:30-3:00 Marketing basics Harman, Cole	1:30-3:00 Swarming Caron, Tew
3:30-5:00 Mites Sammataro, Shimanuki, Ostiguy	3:30-5:00 It's the label- stupid! Flottum, C. Griggs	3:30-5:00 Honey Production Troup, Cole
7:00-9:00 What's the future?**** Q & A	7:00-9:00 Judging Quality Harman, Q & A	7:00-9:00 Managing Smarter Not More Flottum, Q & A

- * Cole - reading the hive, Troup - honey/feeding, Hopkins - rule of 3
- ** Harman - honey house design, J. Gaglione - price this jar!, Thibault - honey handling
- *** Hopkins - the healthy hive, Carl - disease inspection, Sammataro - mite sampling
- **** What's the future panel - Shimanuki, vanEngelsdorp, Sammataro

TUESDAY Choose One Session Each Day (see registration form)

Pollination/ Other Products MB Supervisor Cooper	Management - North MB Supervisor B. Cole	Qn. Rearing Supervisor Nasr
8:30-10:00 Pollination basics Mendes + Jadcak	8:30-10:00 Fall/Winter Frazier + Cooper	8:30-10:00 Queen Biology Nasr + Mountain
10:30-12:00 Managing on the Move Panel Jadcak, Caron, Mendes	10:30-12:00 In The Apiary (3) Morris + Carl + Tew	10:30-12:00 Basics of grafting Nasr + Danka
1:30-3:00 Other Bee Products Thomas + Harman	1:30-3:00 Swarming Tew + vanEngelsdorp	1:30-3:00 Demos (3) Hopkins + Nasr+ Mountain
3:30-5:00 Demos in Lab (3) S Shimanuki+ Thomas + V/J Gaglione or Apitherapy	3:30-5:00 Spring-Summer Cole +Caron	3:30-5:00 Mating Nucs/ Queen Selection, etc Nasr + Danka

WEDNESDAY – Combined session for both groups

8:30-9:00

Evaluating Queen Quality. *Dr Robert Danka, USDA Bee Lab, Baton Rouge, LA*

9:00-9:30

Quality Bee Colony Rentals for Economic Vitality for Blueberry Growers. *Tony Jadcak, ME Dept Agr. Apiary Inspector, Augusta, ME*

9:30-10:00

How Small is the Small Hive Beetle? *Dr. Jeff Pettis, USDA Bee Lab, Beltsville, MD*

Break

10:30-11:15

Solving Beekeeping Challenges - a Global Perspective. *Dr. Nicola Bradbear, Bees for Development, Wales (United Kingdom)*

11:15-12:00

Botany for Beekeepers - Food for Thought *Mike Griggs, USDA Entomologist, EAS 2002 President-elect, Ithaca, NY*

Spring, 2001

On Campus—Off Campus Accommodations

Plan to REGISTER EARLY for the Short Course and/or Conference. Registration will begin with your receipt of the **Spring** EAS Journal. Cape Cod is a very desirable vacation destination. Accommodations will fill up quickly. **On Campus** room rates are as follows: \$55 single occupancy per night. \$70 double occupancy per night. A third person may lodge in your room using a rollaway bed (add'l \$15/night). For more information on registration and *On Campus* accommodations contact: Jan Gaglione, 978.535.1622, Jgagli1646@aol.com or Kathy Hough 978.468.6000, beesbest@mediaone.net.

The BEST resources for obtaining **Off Campus** accommodations are our local Chambers of Commerce. We've also listed some of the hotels here. EVERYONE considering attending EAS 2001 should obtain a **FREE** copy of the **Guidebook 2000-2001**. It's a valuable resource LOADED with information about the surrounding area. And, it's available by contacting the: **Cape Cod Canal Region Chamber of Commerce, 70 Main Street, Buzzards Bay, MA 02532, 508.759.6000**. E-mail: canalreg@capecod.net Webpage URL: www.capecodcanalchamber.org. The CCCRCOC main office is located at the corner of Academy Drive and Main Street, in Buzzards Bay, MA, no more than 1/4 mile from the MMA campus. They know the area **very** well, and will be most helpful.

You may also access many other helpful links by using our fabulous EAS 2001 website: <http://www.capecod.com/bcba/eas2001.html>. **EAS 2001 - Bees By The Sea. Cape Cod, Massachusetts. See YOU there!**

Campgrounds Nearby the MMA Campus

Bay View Campgrounds, Inc.
260 MacArthur Blvd.
Bourne, MA 02532
508.759.7610; www.bayviewcampground.com

Bourne Recreation Authority
Route 6 Scenic Highway
231 Sandwich Road
Bourne, MA 02532
508.759.8904 ext. 8; Email: recauthgm@capecod.net

Bourne Scenic Park
Route 6 Scenic Highway
Buzzards Bay, MA 02532
Can easily bicycle or walk to MMA campus from BSP.
508.759.7873

Area Hotel Information

The following hotels and motels are located within driving distance of the Mass Maritime campus. Please identify yourself as being with EAS/Eastern Apicultural Society, as many of these hotels have rooms set aside specifically for us. Additional hotel information can be found on the Cape Cod Canal Region Chamber of Commerce web site.

Best Western Bridge Bourne Hotel

100 Trowbridge Road
Bourne, MA, 02532
508.759.0800
508.759.4575 (Fax)
Room Rate: \$99*
Drive Time to MMA: 5 minutes
Pool: Indoor

Note: Room rate available only when booking directly with the hotel and mentioning that you are with EAS. This rate is **not** available via the Best Western 800 reservations line, nor is it available when making reservations over the web.

Days Inn

30 East Clark Street
Middleboro, MA, 02346
I-495, exit 41, Rte 104 North
508.946.4400
Room Rate: \$90*
Drive Time to MMA: 20 minutes
Pool: Outdoor

Note: Room rate available only when booking directly with the hotel and mentioning that you are with EAS. This rate is **not** available via the Days Inn 800 reservations line.

Sandwich Lodge & Resort

54 Route 6A
Buzzards Bay, MA, 02563
508.888.2275
Room Rate: \$116-\$159
Drive Time to MMA: 20 minutes
Pool: Indoor & Outdoor

Bay Motor Inn

223 Main Street
Buzzards Bay, MA, 02532
508.759.3989
Room Rate: \$80-\$100*
Drive Time to MMA: 3 minutes
Pool: Outdoor

*Note: Call for reservations starting March 1, 2001.

Ramada Inn

40 North Main Street
Falmouth, MA, 02540
508.457.0606
Room Rate:
Drive Time to MMA: 20 minutes
Pool: Yes

Holiday Inn

291 Jones Rd
Falmouth, MA, 02540
508.540.2000
508.548.2712 (Fax)
Room Rate:
Drive Time to MMA: 20 minutes
Pool: Indoor

Getting To Cape Cod

Address:

Massachusetts Maritime Academy
101 Academy Drive
Buzzards Bay, MA 02532
508.830.5000

From The South - Take I-95 North to Providence, RI. Take I-195 East to Route 25 East. Take the second Buzzards Bay Exit.

From The West - Take I-84 to I-90 East (Massachusetts Turnpike). Take I-495 South to Route 25 East. Take the second Buzzards Bay Exit.

From The North - Take I-93 South to Route 3 South to Route 6 & 28 West to Buzzards Bay. Take Route 24 South to 495 South to Route 25 East. Take the second Buzzards Bay Exit.

Follow MMA signs - Once on Main Street in Buzzards Bay make a left at the only set of lights onto Academy Drive. Follow to the MMA campus.

By Air

Two international airports service southeastern Massachusetts. T.F. Green Airport (PVD) in Providence, RI and Logan Airport (BOS) in Boston, MA. Both are approximately one-hour driving time from the MMA campus in Buzzards Bay, MA

2001 Main Conference

Conference Program Schedule At A Glance

(See Workshop Schedule on Page 13)

August 8 – 10, 2001

WEDNESDAY	THURSDAY	FRIDAY
	8:30 – 10:00 am Session II *Session III	8:30 – 9:20 am Session VI
		9:20-9:45 am Student Award Winner
	10:00 am break	9:45 am break
	10:30 am – Noon Session IV *Session V	10:15 - 11:15 am Session VII
		11:15 am Preview of EAS 2002
		11:25 am Annual Business Meeting
noon-lunch	noon-lunch	noon-lunch
1:30-2:15 pm Welcome		
2:15-3:15 pm Hambleton Award Winner	1:30 – 5 pm Workshops	1:30 – 5 pm Workshops
3:15 pm break		
3:45-5:00 pm Session I		
6 pm dinner	6:30 pm New England Lobster Boil	6:30 pm Banquet
7 pm Wed. Evening Social		
8 pm Speaker	8:30 pm EASFHBR Auction	8 p.m. Banquet Speaker
9 pm Film		

*Bay State Room all other sessions scheduled for the Harrington Building Auditorium

Conference Program In Detail

Welcome

Jay Barthelmeus, EAS President

MMA Official

State Agricultural Official

Jeffrey LaFleur, Executive Director Cape Cod

Cranberry Association (Industry)

Massachusetts Agricultural Specialist (Research)

Session I: Use of Apis Species Through Out the World

Chairperson, Dr. Gard Otis, Associate Professor,

U. of Guelph, Ontario Canada

Overview of Species and Biologies, *Dr. Gard Otis*

Honey Hunting, *Dr. Gordon Wardell*

Beekeeping with *Apis cerana* in China, *Dr. Zachary Huang*

Management of African bees, *Dr. Nicola Bradbear*

Session II: Pests and Diseases

Chairperson, Dr. Jeff S. Pettis, Research Entomologist,

USDA, Beltsville, MD

Introduction, *Dr. Jeff S. Pettis*

American Foulbrood, *Dr. Hachiro Shimanuki*

Small Hive Beetle, *Dr. Jeff S. Pettis*

Tracheal Mites, *Dr. Robert Danka*

Varroa Mites, *Dr. Nicholas Calderone*

Session III: Alternative Pollinators

Chairperson, Dr. John A. Skinner, Associate

Professor, Entomology and Plant Pathology, U. of TN

Use of Native Bee Pollination, *Dr. Blair Sampson*

Vine Crop Pollination, *Dr. Mike Stanghellini*

Other Native Pollinators, *Dr. John A. Skinner*

Session IV: IPM Hive Management

Chairperson, Dr. Dewey Caron, Professor, Entomology
and Applied Ecology, U. of Delaware

Overview of the IPM concept, *Dennis vanEngelsdorp*

Evaluation of Queens – a very basic IPM approach,

Dr. Medhat Nasr

A Non-Chemical Approach to Varroa Mite Control,

Dr. Zachary Huang

A Truly Integrated Regional Approach to IPM Research,

Dr. Diana Samnataro

Delivery of IPM - the MAAREC approach, *Maryann Frazier*

Session V: North East Commercial Beekeeping

Chairperson, Kim Flottum, editor, Bee Culture

History of Migratory Pollination in Eastern U.S.

and Canada, *Kim Flottum*

The Maine Event, Wild Blueberries and Beekeepers,

Tony Jadcak

East Coast Commercial Pollination, *David Mendez*

A Sideline Beekeeper's Perspective, *Bill Troup*

Session VI: Basic Aspects of Bee Breeding

Sue Cobey, Staff Apiarist, Ohio State U., and

Dr. Gard Otis, Associate Professor, U. of Guelph,

Ontario Canada will collaborate on two presentations.

Program Details Cont. On Next Page

Session VII: Improving Our World Through Beekeeping
Chairperson, Ann Harman, International Apicultural
Consultant
Overview, *Ann Harman*
Honey bees in Developing Nations, *Bob Cole*
Bees for Development, *Dr. Nicola Bradbear*

Wednesday Evening Speaker

Dr. Wyatt Mangum
Mathematics Department
Mary Washington College

Film

The Magic Trees of Assam. Idea and Scientific Advisor, Gerald Kastberger. It follows the journey of a giant honey bee colony as it migrates from the foothills of the Himalayas to the plains of Assam. There is fantastic filming of *Apis dorsata*. How the colony lives and works, defending itself from predators, and most remarkably, gathering to leave on migration.

Banquet Speaker

Dr. Eric Erickson
Director
Carl Hayden Bee Research Center



Transporting Your Entries

August is a hot month! Don't let your show entries suffer in a hot car. You need to protect all honey, wax, mead, cookery, even some crafts, and possibly photographs from being roasted in a hot car while you stop and get lunch on your way to EAS. Use some of those inexpensive foam ice chests to keep your entries cool and comfortable.

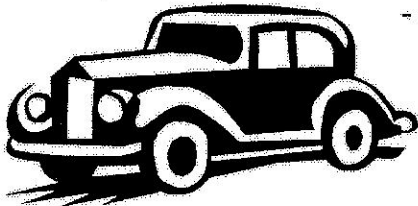
Use some of that bubble wrap to keep jars and bottles from clinking together. Please don't use newspaper to wrap up your entries. Although some newspapers are using inks that don't rub off, some still use the old smeary black ink. Be careful.

Protect those cookery entries from humid summer air. Honey picks up moisture and can leave cookies a gooey mess.

If your candles and wax entries develop a "bloom" when chilled, don't worry. As soon as they are taken out of an ice chest and warmed up, the bloom will quickly disappear.

You and your bees worked hard to prepare those entries. Don't let the heat and humidity damage them!

- Ann Harman



SOMETHING NEW

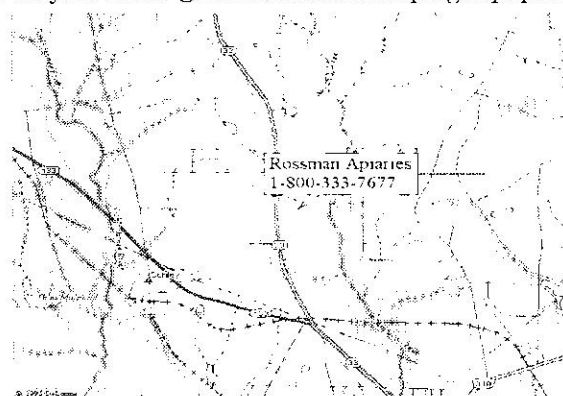
The mailing label on your Journal this time is designed to "restick." We would appreciate it if you will attempt to reuse that label and place it on your registration in the appropriate spot. This is a part of our ongoing endeavor to keep our records straight and keep up with all of our members. By using this label you allow us to match exactly your registration form with the way we already have you in the computer.

Glen Thomas, from Tennessee, is doing an excellent job at bringing EAS into the future as far as membership records go. We should all applaud his efforts. Again, the label will help Glen and EAS keep up with you. Thanks!

If you have
questions about
EAS 2001 that are not
answered in this Journal
contact Jay Barthelmeus,
508.430.2740;
capebees@capecod.net

All Roads Lead to Moultrie, GA

For all your Bees, Queens, and Beekeeping Equipment



Focus on Rossman Apiaries

In 2001

1-800-333-7677

We raise our own Italian bees and queens
Our "Longlife" Cypress wooden equipment
is processed here in our facility
Allow us the opportunity to serve you



P.O. Box 909 • 3364A GA Hwy 33 N
MOULTRIE, GA 31776-0909
912.985.7200 • FAX 912.985.0209
Order Line Only: 800.333.7677
EMAIL: Jrossman@surfsouth.com

EAS 2001 REGISTRATION

Short Course and conference August 5 through 11 2001

Mass Maritime Academy, Bourne, Massachusetts

To avoid a late fee, reservations must be post-marked by May 15, 2001.

WHERE CAN WE REACH YOU? THIS INFORMATION IS CRITICAL!

Name(s): _____
 Address: _____
 City: _____ State _____ Zip _____
 Day telephone _____ Eve. Telephone _____
 E-mail _____ FAX _____

WHO ARE YOU? Name tag information: This information will appear on your **name tag**. List all attending adults and children. Check all categories that apply for each person. If more than 4 in your party, please use an additional sheet of paper.

First name	Last Name	City & State only	Life Member	Master Beekeeper	Director	Delegate	Speaker	Vendor	Volunteer
a.									
b.									
c.									
d.									

1. EAS Dues: Individual \$15.00; Family \$20.00 (Dues must be paid for attending family members who are not Life Members)
 Life Membership: \$200.00 (must be paid in one installment)

Name(s) for Life Membership: _____ Dues \$ _____

2. Short Course - 8:30 AM Monday August 6 through Wednesday noon August 8, 2001

Please list the names of those attending each level.

Level I Beekeeping Fundamentals

Name	Enter fees to the right	
a.	\$100	\$
b.	\$100	\$
May be unavailable to late & walk-in registrants		Level I Sub-Total \$

Level II Advanced topics in Beekeeping

(Circle one session per person for each day -- joint session with level I on Wed.)

Name	Monday			Tuesday			Enter fees to the right		
c.	IPM	Marketing	Management	Pollination	Management	Q. Rearing	\$125	\$	
d.	IPM	Marketing	Management	Pollination	Management	Q. Rearing	\$125	\$	
May be unavailable to late & walk-in registrants						Level II	Sub-Total	\$	
Short Course-Levels I & II								Total	\$

3. Main Conference Registration - 1:30 P.M Wednesday August 8., through Friday evening

Individual.....\$110.00 \$ _____

Couple or family (at the same address).....\$150.00 \$ _____

One day Registration: Circle Day Attending WED THUR FRI _____ # of Attendees X \$50 = \$ _____

Mail-in registrations not post marked by May 15 pay late fee. Late Registrations postmarked after July 15 will not be accepted by mail. **LATE & WALK-IN REGISTRATIONS MAY BE LIMITED TO CONFERENCE ONLY.**

Total \$ _____

Mail Check with this completed form to:

EAS 2001 Registrar

P.O. Box 90

Topsfield, MA 01983-0090

Contact: Jan Gaglione 978-535 1622 (evenings)

Kathy Hough 978-468-6000 (Red Maple Farm)

Email: jgagli1646@aol.com OR beesbest@mediaone.net

Page 1 Subtotal Items 1, 2 & 3 \$ _____

(Continued on next page)

Short Course, Meals, Tours, & On-Campus Housing may be Unavailable to Late or Walk-in Registrants

EAS 2001 REGISTRATION (page 2)

4. ACCOMODATIONS: May not be available to late or walk-in registrants. Smoking is not permitted in the University Buildings. Each room has two single beds and shared bath facilities. Linens are included.

☐ CHECK HERE IF YOU REQUIRE HANDICAPPED FACILITIES.

Place an "X" under each night you need accommodations.

	SUN	MON	TUE	WED	THU	FRI	#of nights	X	price	=	Total
Single								X	\$55	=	
Double (first person)								X	\$55	=	
Double (second person)								X	\$15	=	
Additional roll-away								X	\$15	=	
Total											\$

ROOMMATES: If you plan to share a room with someone not listed on this form, please provide their Name and City:

Roommate name: _____ City/State: _____

5. MEALS: Mass Maritime Cafeteria meals. Individual meals will not be available for sale at the conference. Children 10 & under qualify for children's prices. Only BBQ & Banquet available Thu. & Fri night.

	Mon	Tue	Wed	Per person	# adults	# children	\$
Short Course	Breakfast	Breakfast	Breakfast	\$59 (adult)			
	Lunch	Lunch	Lunch	\$30 (child)			
	Dinner	Dinner					
Main Conference OR Lunches only - Conference							
	Wed	Thurs	Fri				
		Breakfast	Breakfast	\$36 (adult)			
		Lunch	Lunch	\$18 (child)			
	Dinner						
	Lunch	Lunch	Lunch	\$21 (adult)			
				\$11 (child)			
Total							\$

Only BBQ & Banquet will be served Thurs. & Fri. night (see * below)

MEALS MAY NOT BE AVAILABLE TO LATE OR WALK-IN REGISTRANTS.

6. SPECIAL EVENTS: All special events require reservations and an EAS conference ID. Tours do not include lunch.

DAY	EVENT	PRICE per PERSON	NUMBER ATTENDING	COST
TUESDAY	Cranberry World & Plymouth Colony Winery: 9am-12:30pm	\$10		
TUESDAY	Deep Sea Fishing: 6 hours on the Onset Chief II 11:30am - 6:30pm	\$50		
TUESDAY	Mayflower II/Plymouth Wax Museum: 2pm - 5pm	\$20		
WEDNESDAY	Whale Watch: to the Stellwagen Banks - lunch on your own (snack bar on board) 9am - 2pm	\$35		
WEDNESDAY	Cape Cod Canal Sunset Cruise: Historical narration & Blues music by <i>Blues Alley</i> , 7pm - 9pm	\$10		
*WEDNESDAY	Welcome Reception & Dessert 7pm - 8pm	FREE		
THURSDAY	Deep Sea Fishing: 6 hours on the Onset Chief II 11:30am - 6:30pm	\$50		
THURSDAY	Mayflower II/Plymouth Wax Museum: 2pm - 5pm	\$20		
THURSDAY	Cranberry World & Plymouth Colony Winery: 9am-12:30pm	\$10		
*THURSDAY	Lobster Boil/Steak BBQ: _____ # Lobster or _____ # Steak	\$35		
FRIDAY	Kennedy Museum & Christmas Tree Shop: 8:30 am - 12:30 pm	\$15		
*FRIDAY	Banquet: _____ # Carnivore or _____ # Vegetarian	\$20		
Total				\$

Tours are available on a **first come/first served** basis & are subject to cancellation (& refund) if insufficient reservations are received - & **may not be available to late & walk-in registrants.**

Registrations postmarked after May 15 pay late fee

Page 2 Subtotal, Items 4,5, & 6 \$ _____

Registrations postmarked after July 15 will not be accepted by mail.

Sub total from Page 1 \$ _____

Late Registration fee = 5% of total - minimum \$25 **Late Registration fee \$** _____

Refunds will be granted until June 15 minus a \$50 processing fee.

Grand Total \$ _____

(Mailing & Contact information is on the bottom of Page 1)

Please Make Check Payable to "EAS 2001"

THURSDAY

1:30 to 2:15 PM

Breeding Northern Queens - panel

Mac Hedgpeth, RI & Rollin Hannan, CT Bee Breeders

Back to the Classroom, Public Presentations

Ray Lackey, Master Beekeeper

Creamed Honey Production - small scale

Vin Gaglione, Crystal Bee Supply

Two-Queen Hive Systems

William Denhard, Essex County Beekeeper

2:15 to 3:00 PM

Wintering in the North

Tony Jadczyk, ME State Apiarist

Pollen & Propolis Collecting (Thur only)

Steve Forrest, Brushy Mountain Bee Farm

How's and Why's of Masterbeekeeping Program

Clarence Collison, MS State Univ

Observation Hive Know-How

Dewey Caron and Wyatt Mangum

IN THE APIARY - 1:30 TO 3:00 P.M.

Nucs, Splits, Two-Queen Hives

Bob Cole, NC; James Tew, OSU;

David Eyre, The Bee Works

BREAK 3:00 to 3:30 P.M. (in the Vendor Tent)

3:30 to 4:15 P.M. - THURSDAY

Attributes of Available Races - Panel (Thurs. only)

Sue Cobey, OH State; Medhat Nasr, Ontario Bkprs.

Wax Handling/Candle Making

Gus Skamarycz, Pegus Apiaries

Cosmetics/Lotions from Hive Products

Birgit DeWeerd, deWeerd Bee Products

History of Beekeeping - prehistory thru late Middle Ages

Robert Sheahan, CT Beekeeper and Historian

4:15 to 5:00 P.M.

"Adulteration" of Honey with Herbs and Fruits

Ann Harman, Master BeeKeeper, EAS Vice-Chair

Reinventing Honey on the Street (Thur Only)

Jack Thomas, Mann Lake

National Honey Board

TBA

Using Formic Acid & Styrofoam Hive Success

Bob Stevens, Betterbee

IN THE APIARY - 3:30 TO 5:00 P.M.

Hive Inspections - Quick, Effective, Thorough

State Inspectors: *Al Carl, MA; Tony Jadczyk, ME;*

and Bob Wellemeyer, VA

Spring, 2001

FRIDAY

1:30 to 2:15 PM

Breeding Northern Queens - panel

Mac Hedgpeth, RI & Rollin Hannan, CT Bee Breeders

Back to the Classroom, Public Presentations

Ray Lackey, Master Beekeeper

Creamed Honey Production - small scale

Vin Gaglione, Crystal Bee Supply

Two-Queen Hive Systems

William Denhard, Essex County Beekeeper

2:15 to 3:00 PM

Wintering in the North

Tony Jadczyk, ME State Apiarist

Apitherapy "The Dawn of a New Medicine"

Theo Cherbuliez, MD (Fri only - 1 hour)

How's and Why's of Masterbeekeeping Program

Clarence Collison, MS State Univ

Observation Hive Know-How

Dewey Caron and Wyatt Mangum

IN THE APIARY - 1:30 TO 3:00 P.M.

Walk Thru the Hives with Master Beekeepers

Jim & Penny McCaig, Bryan Shanks, Ontario;

Ray Lackey & Aaron Morris, New York

3:30 to 4:15 P.M. - FRIDAY

Breeding the Better Bee (Fri. only)

Sue Cobey, OH State; Gard Otis, U Guelph

Wax Handling/Candle Making

Gus Skamarycz, Pegus Apiaries

Cosmetics/Lotions from Hive Products

Birgit DeWeerd, deWeerd Bee Products

History and Making of Mead

Robert Sheahan, CT Beekeeper and Historian

4:15 to 5:00 P.M.

"Adulteration" of Honey with Herbs and Fruits

Ann Harman, Master Beekeeper, EAS Vice-Chair

Honey Bees As Air Quality Monitors

Jerry Bromenshenk, Univ MT

National Honey Board

TBA

Dealing with Bee Emergencies

Eric Erickson, Dir., Hayden Bee Research Ctr.

IN THE APIARY - 3:30 TO 5:00 P.M.

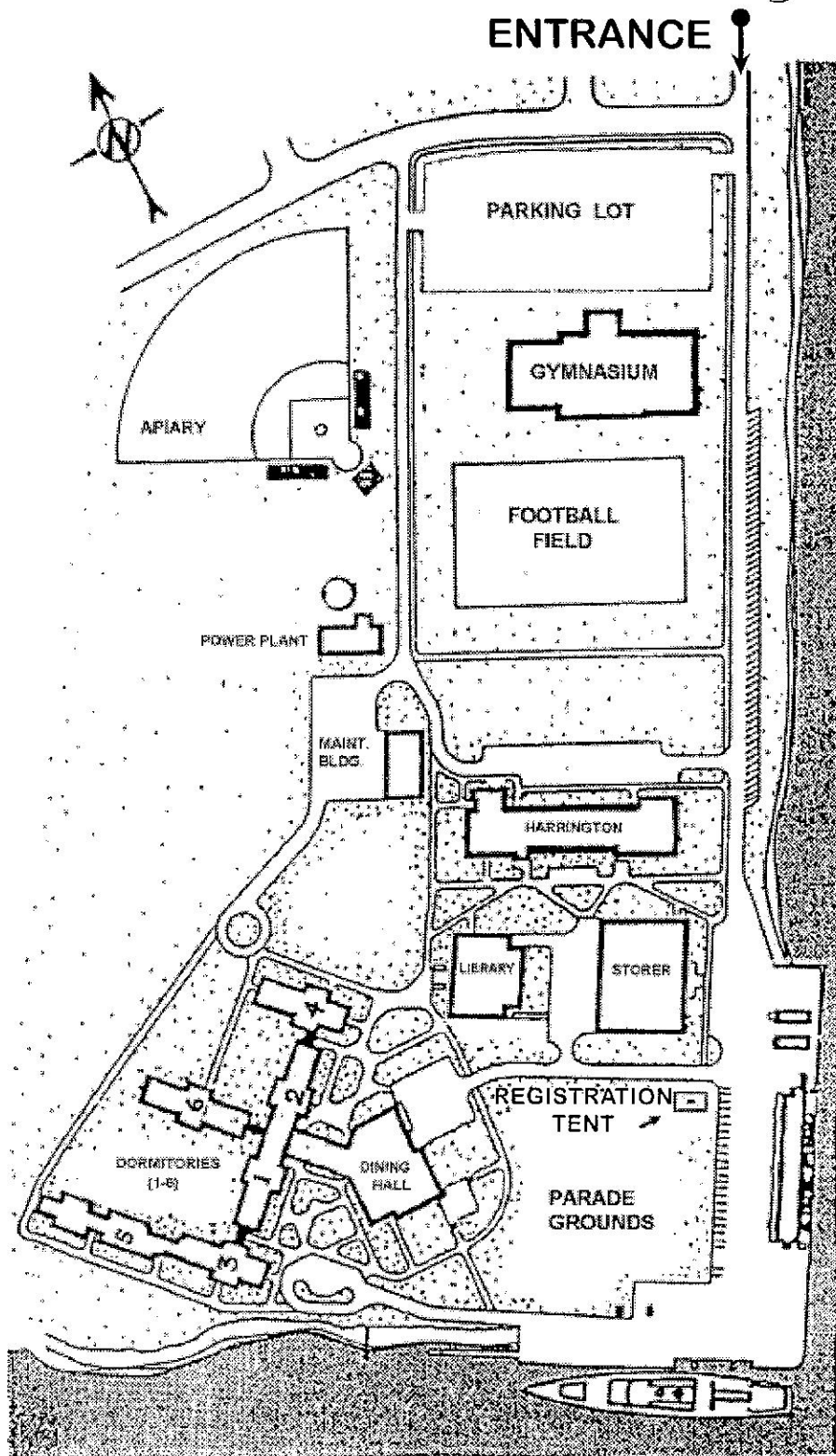
Queens, Queens, and more Queens

Mac Hedgpeth, RI; Rollin Hannan, CT;

and TBA, Northern Breeders

MASS Maritime Academy

ENTRANCE



When you arrive at Mass Maritime Academy you will need to go first to the Registration Tent. There you will receive all your instructions and materials and be given directions to your dorm.

New York 2002!

How did I get here? I did not start keeping bees rather it was butterflies that attracted my interest as a youth. When my peers were collecting match-box cars I was collecting Monarchs or Swallowtails. My first paying job as an entomologist was catching lightning bugs at a penny a piece for Sigma Scientific. This may have been a turning point where I became motivated to cultivate insects for profit.

After getting a BS in forest botany from the College of Forestry in Syracuse I lingered as a research technician long enough to get accepted into a masters program in Forest Entomology. Here I worked on an IPM program to protect the American Elm in Washington, DC from Dutch Elm Disease. I think I would have remained a graduate student forever if I had not gotten stung with an interest in bees. I somehow talked my professors into allowing me to study the honey bee even though they were skeptical that they could be considered a forest insect.

Soon after completing my MS, I signed up with Peace Corps and spent about three years, first volunteering as beekeeping extensionist and later as a trainer for volunteers in Tunisia North Africa. An experience I will not forget!

Inevitably I had to return to life in the States, where I quickly found a job that I have stayed with since. Here I also met my wife, Cathy (EAS 2002 first lady), who is a middle school science teacher. I have one daughter, Sarah, who is seven. She tolerates my enthusiasm with bees but is not sure she wants to be a beekeeper. She wants to be a dancer – this week.

I work with a USDA group here at Cornell, conducting research on fungal pathogens of insects as alternatives to pesticides. I currently have 20 hives and attempt to utilize the IPM techniques that I advocate through my training.

I've always had trouble saying no! It has, however, created more opportunity than folly in my life. Soon after I was elected president of the Finger Lakes Beekeepers Association fate crossed my way again and I consented to president the EAS 2002 meeting here in Ithaca. I can see now that it is going to be an extreme amount of work by the host team but will be a great time with the facilities, program and participants to make EAS's return to NY a grand event.

I hope to see you all in Cape Cod in 2001 and at Cornell in NY in 2002!

- Mike Griggs, 2002 President

Spring, 2001

MAXANT INDUSTRIES

**MA Manufacturers
of Excellent
Beekeeping
Equipment.
See You At Bees By
The Sea EAS 2001**

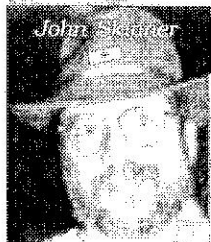
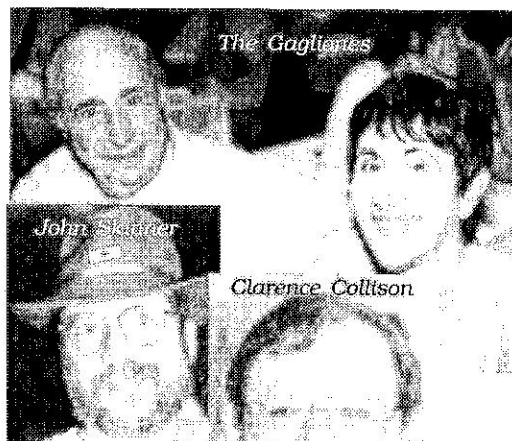
Call or Write for Details • Send \$5.00 for Catalog.

PRODUCED ONLY IN AMERICA

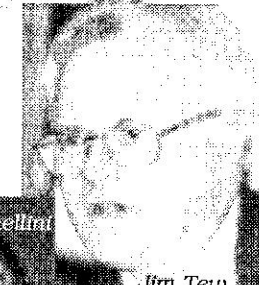
MAXANT IND.

P.O. Box 454 • Ayer, MA 01432
Phone (978) 772-0576 • FAX (978) 772-6365
email: ric56@net1plus.com

Part Of The 2001 Team



Clarence Collison



**IF YOU WOULD LIKE TO PLACE
AN AD IN THE JOURNAL PLEASE
CONTACT THE EDITOR.**

EAS Dues Payment/Address Correction Form

Name _____

Address _____

City/State or Province/Code _____

Phone/Fax _____ Email: _____

Annual Dues: \$15 per person or \$20 family \$ _____

Life Membership Dues: \$200 (one payment) \$ _____

EAS Foundation Gift \$ _____

**Do not send to EAS Journal Editor. Send your check to -
Don Chirnside, EAS Treasurer
99 Weavers Road North Kingstown, RI 02852-7135 USA**

We'll Be There

I learned beekeeping as a PhD student of Dr. Roger Morse at Cornell. I filled in for Roger as a teacher of his popular introductory beekeeping course and helped insure completion of the Dyce



Ann Harman & Dewey Caron

Honey Bee Lab when Roger went on sabbatical to the Philippines during my four years in Ithaca. Following Ithaca, I

was apiculturist at the University of Maryland (1970-1981) before moving to the University of Delaware as Department Chair. I have remained at Delaware as Professor and extension Entomologist with a three-way split of extension (apiculture and ornamental plant pests), teaching (large, popular introductory courses in entomology, and wildlife biology + two courses on beekeeping) and research (cucurbit pollination, bee mites, bee pests and queen replacement/swarming). I helped EAS initiate the Master Beekeeper program (in 1981), revived the short course preceding the conference (1979), was president (1986), and Chairman of the Board (1990-1998). I currently head the EAS Foundation for Honey Bee Research, the sites committee and was the organizer for the 2001 Short Course. - Dewey Caron, Univ. of DE

Although I wanted to keep bees my entire life, I did not have any until I was presented with a swarm well over 20 years ago. At that point I realized that I knew nothing about bees. Fortunately I met Ernie Miner of Maryland who was an equipment dealer and beekeeper. Together we attended the apiculture course at the University of MD, taught by Dr. Dewey Caron. That was the smartest beekeeping thing we ever did. From there I entered the world of local and state beekeeping associations, and particularly the Eastern Apicultural Society. In 1981, the first year of the Master Beekeeper program, I became an EAS Master Beekeeper, along with Ernie. Miner and Bob Cole. I have held offices in local, state, regional and national beekeeping organizations and also put my Master Beekeeper status into good use teaching Short Courses, not only at EAS but at other organizations. My bees may feel neglected from time to time since I travel to developing countries (13 countries, 22 assignments) to help them bring their beekeeping into the modern world. At present my hives make a teaching api-

ary on a Virginia farm whose programs are designed to teach youth - junior and senior high school age - stewardship of the land. - Ann Harman, Flint Hill, VA

I am a graduate of the University of MI with a BA in landscape architecture and an MA in urban forestry. During this time, I persuaded the adult education department in Ann Arbor to let me teach beekeeping classes; the notes from those classes became the first edition of the book, the Beekeeper's Handbook, which was coauthored with Al Avitabile, of Bethlehem, CT. I next was a Peace Corps volunteer teaching beekeeping in the Philippines where I modified part of the book to tropical conditions. On returning to the U.S., I spent a few years at the USDA Bee Lab in Madison, WI, then went on to work with the A.I. Root Co. as a Sales Manager for Bee Supplies. Early in the 90s I returned to school, working with Rothenbuhler Bee Lab at Ohio State (Columbus), and earning a PhD studying the effects of oil on tracheal mites. Currently, I am, a Research Associate at Penn State University, working with faculty in the Entomology Dept developing an IPM strategy to manage varroa mite levels.

- Diana Sammataro, Penn State

I am a research entomologist at the USDA Bee Research Laboratory in Beltsville, MD. I am currently conducting research on the control of parasitic mites, small hive beetles and American foulbrood in honey bees. I completed BS and MS degrees in entomology at the University of Georgia and my doctoral degree at Texas A&M University supported by a research agreement with the USDA Honey Bee Research Unit at Weslaco, TX. My work there focused on the reproduction and dispersal behavior of honey bee tracheal mites. I then was a postdoctoral associate at Simon Frazer University with Dr. Mark Winston where I studied the role of pheromones on honey bee behavior and crop pollination as well as a study on resistance mechanism of honey bees to tracheal mites. I moved to Beltsville in 1996 and have enjoyed several EAS conferences since. - Jeff Pettis, USDA Beltsville

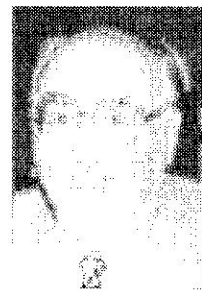
I am 1999 past President of EAS when the conference was held in TN. I have been a beekeeper since 1991 and maintain about 20 colonies with my husband, Glen. I use the products of their hives to make beeswax items and herbal honeys. I enjoy speaking to youth groups and community organizations throughout the year about the importance of beekeeping and I give many demonstrations/workshops about hive products. I was President of TN's state beekeeping organization

(96-99) and of my local association (93-95); currently I am happy to serve as the Editor of the state beekeeping newsletter, the Hive Tool, and Secretary/Treasurer of the local association. I am TN's Director on the EAS Board. I market the products Glen and I produce through Glenmar Gardens. - Marlene Thomas, Kingston, TN



I am a Research Entomologist with the USDA Honey Bee Breeding, Genetics and Physiology Laboratory in Baton Rouge, LA. My early training in honey bees was under the guidance of Dr. Clarence Collison at Penn State, where I received BS and MSc degrees. A valuable part of this early training came from participation in EAS meetings and interactions with members during 1978-82. I next undertook PhD research on Africanized bees, studying with Dr. Tom Rinderer in Venezuela. This research earned the EAS Student Award in 1987. Since becoming a permanent member of the USDA scientific staff, I have investigated several aspects of the biology and control of Africanized bees. Most of my recent research has sought to understand the mechanisms and breeding characteristics of genetic resistance of honey bees to tracheal mites, and to encourage and facilitate use of resistance by commercial queen breeders. - Robert Danko, USDA Baton Rouge

I operate an 800 colony beekeeping operation as Pot'Ogold Honey from my residence in Todd, NC. I am a pollinator in my region and a honey producer of the much sought-after sourwood honey. I have been involved in beekeeping since the age of 3 learning from two grandfathers. I have been active in EAS for many years. I became an EAS Master Beekeeper in the first year the society offered the exam (1981) and have served as EAS Chairman of the Board (1985-1990) as well as on numerous additional committees. I have been an EAS Short Course instructor a number of years. - Bob Cole, Todd, NC



I am a migratory beekeeper and commercial honey producer. I live in North Dartmouth, MA, but winter my bees in Florida. I have on average 6000 colonies, and have four full time and some seasonal help running them. I pollinate two main crops...wild blueberries in Maine, and cranberries in MA. After cranberries I stay in the Northeast to make honey for the remainder of the season. I started my career in the mid-seventies. - David Mendez

Spring, 2001

I am the State Inspector for the state of Maine. Although inspecting Maine beekeepers' colonies is integral to my job, my biggest task is dealing with the thousands of colonies that come to Maine each year to pollinate the wild blueberry crop. Colonies from all over the U.S. arrive in May and I have a small window to inspect these colonies for pests and diseases. I am a sideline beekeeper on my own, and have been a regular speaker at EAS. I am a past President and Director from my home state. - Tony Jadcak, ME Dept. of Agr.

I am a sideline beekeeper with about 130 colonies. I also sell nucs, queens, honey, wax, bee supplies and is a commercial pollinator. I use virtually all of my colonies in pollination, working with apples in the spring and pumpkins in the summer. I move all my bees on trailers and have some unique customers. I use one helper in my pollination operation, and my wife, Nancy, helps with all the rest of my operation. Bill and Nancy are both EAS Master Beekeepers, and I am the EAS Director for Maryland. - Bill Troup, Williamsport, MD

I was born and raised in Arizona. I enrolled in the biology curriculum at Northern Arizona University in Flagstaff and graduated with a BS designated as Cum Laude. I then went to work for the U.S. Forest Service as a Biological Technician for eight months before attending graduate school at NC State University. I completed my Masters Degree in July, 1996 and earned my doctorate in December, 2000 - both in entomology. John Ambrose served as my major advisor. The research for my graduate work was focused on comparing the efficiency and efficacy of honey bee colonies vs bumble bee colonies in the pollination of various crops. - Michael Stanghellini, NCSU

I am president of the American Apitherapy Society and Apimondia Commission of Apitherapy - involved with apitherapy for the last 15 years lecturing around the world. I am currently involved in setting up and developing a medical program in Cuba utilizing hive products. - Theo Cherbuliez, MD

I am a chemist by profession and author of *Let Me Tell You About My Bees*, essays about honey bees and beekeeping. I am owner of deWeerd Bee Products, producing beeswax products such as candles, hand creams and ornaments. I am an active member of Middlesex County Beekeepers and was 1995 Beekeeper of the Year. I enjoy speaking to adults and children on all facets of beekeeping. - Birgit DeWeerd, Bedford, MA

I am the EAS director from New York, owner and editor of BEE-L (oldest Internet discussion group since 1995. I'm a mem-

ber of Southern Adirondack Beekeepers and Empire State Honey Producers. I run 60 hives producing honey, comb honey and beeswax candles. - Aaron Morris, NY Master Beekeeper



several local beekeeping associations holding numerous positions and spend time being a Bee School instructor. - Gus Skamaryca, Tyngsboro, MA

I am a former EAS director and part of the team from MA running EAS 2001. I will be overseeing the Annual Show this year in Cape Cod. I am owner of Pegus Apiaries for honey/pollination - known for Paschal and hand-dipped candles. I belong to

I run 40 colonies for honey and wax and am the owner of Sweet Pines Apiary. I am president of Long Island Beekeepers Association, Honey Bee Consultant to North American Fruit Explorers and contributor to *Bee Culture Magazine*. - Raymond Lackey, NY Master Beekeeper

My specialties are teaching brewing and beekeeping as done 1000AD to 1500AD. I am a Senior Software Engineer at Prolink and a member of the Society of Creative Anachronism. I am a Medieval Historian and enjoy making mead and skeps. - Robert Sheahan, Glastonbury, CT

I graduated from Cornell University with an agriculture degree. I am president of CT Beekeepers Association and employed with the State of Connecticut Agriculture Experimental Station. I run 350 hives and nucs - raise queens, NWC, Russian and Starlines. - Rollin Hannan, Jr., CT

**NEW
LOW
PRICES**

FRAMES

INCLUDES NAILS

UNASSEMBLED

**CHECK THIS
OUT**

ONLY THE BEST FROM ROOT

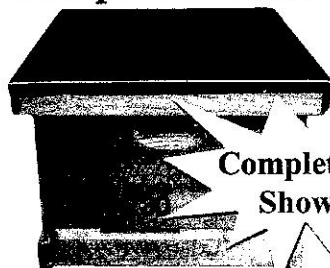
Extra Strength, Extra Fine Finish
(prices do not include postage)

Deep (9-1/8) Frames (10) -----	\$9.00
Deep (9-1/8) Frames (50) -----	\$37.00
Medium (6-1/4) Frames (10) -----	\$9.00
Medium (6-1/4) Frames (50) -----	\$37.00
Shallow (5-3/8) Frames (10) -----	\$9.00
Shallow (5-3/8) Frames (50) -----	\$37.00

The A.I. Root Co. • 623 W. Liberty St. • Medina, OH 44256
800.289.7668, Ext. 3255

"Bee" prepared with Mann Lake Assembled Kits!

Assembled 9 5/8" Complete Hive Kit



WW-730 9 5/8" Deep Hive Kit 1-4.....\$59.95
Deep Hive Kit 5 and up.. \$57.95

Call 1-800-880-7694
For A **FREE** Color Catalog

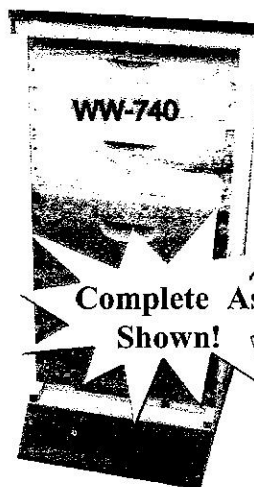
Mann Lake Ltd.

501 S. 1st St
Hackensack, MN 56452-2001
Email: beekeeper@mannlakeltd.com
Fax: 218-675-6156

Mann Lake Ltd. has the kits to fit your needs. From the beginning hobbyist to the expanding apiarist or for garden pollination and decoration! All kits include assembled frames with Rite-Cell® Foundation.

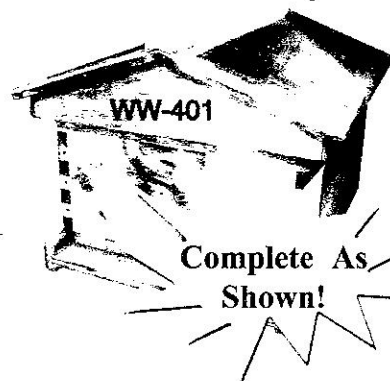
Growing Apiary Kit

WW-740 Growing Apiary Kit....\$145.95



Our hives are already
for a coat of paint and
your package of bees
or captured swarm

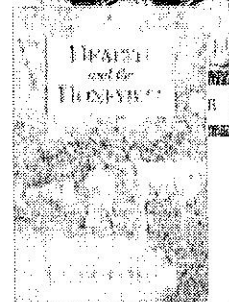
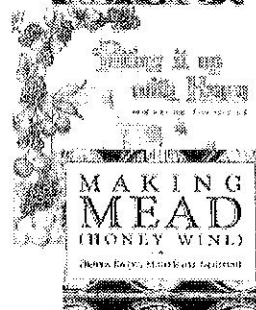
Garden Hivory



WW-401 Copper Telescoping Hive Kit.....\$78.95
WW-755 Garden Hivory Cover With Inner Cover...\$36.95

BEE CULTURE'S BOOKS ON MAKING THINGS

- | | | |
|-----|---|-------|
| X71 | Build Your Own Beehive, Joe Cochran..... | 29.95 |
| | <i>Instructions for Deep, Medium & Shallow Supers plus more</i> | |
| X78 | Putting It Up With Honey, Geiskoph..... | 11.49 |
| | <i>Canning With Honey Recipes</i> | |
| X28 | Making Craftwax Candles | 3.95 |
| | <i>A Primer on Making Rolled Candles. Great For Kids</i> | |
| X39 | Craftwax Creations..... | 5.95 |
| | <i>An Advanced Book On Rolled Candles, and More</i> | |
| X34 | Making Mead, Roger Morse..... | 12.95 |
| | <i>A Practical and Informative Text</i> | |
| X60 | Mad About Mead, Pam Spence..... | 13.95 |
| | <i>The Newest Book On The Subject, With More Than Recipes</i> | |
| X35 | Health And The Honey Bee, Charles Mraz | 13.95 |
| | <i>The Story Of Apitherapy by The Master Himself</i> | |
| X51 | Beeswax Crafting, Robert Berthold..... | 19.95 |
| | <i>Making Everything, and Anything from Beeswax</i> | |
| X58 | Beeswax Crafts, From Search Press..... | 19.95 |
| | <i>Full Color Candles, Crayons, Creams and More</i> | |
| X65 | Beeswax, Roger Morse | 9.99 |
| | <i>The Basic Book On The Subject</i> | |



TO ORDER: Call **(800) 289-7668**, Ext. 3255
or send check or Credit Card to: A.I. Root Book Store
623 W. Liberty, Medina, OH 44256 (All books postpaid in U.S. - Foreign extra)



25 YEARS SERVING USA BEEKEEPERS

MAKE US YOUR SOURCE

**BEEKEEPING EQUIPMENT
CANDLEMAKING EQUIPMENT
SOAPMAKING EQUIPMENT
PACKAGE BEES
QUEENS
UNIQUE CONTAINERS
EXPERT INFORMATION
HIGH FRUCTOSE CORN SYRUP**

FREE CATALOG ON REQUEST

B & B HONEY FARM



5917 Hop Hollow Road
Houston, MN 55943
INFORMATION 1.507.896.3955
ORDER LINE 1.800.342.4811
FAX 1.507.896.4134
EMAIL bbhoney@means.net

FRAME SPACERS SAVE TIME, MONEY AND WORK

Make More Honey
and Wax With Fewer
Frames Per Super

BETTER VENTILATION IN
HIVES, LESS SWARMING

Contact your bee
supply dealer for
Stoller Frame Spacers



From The Colonies

News • Events • Gossip From The EAS Beeyard

EAS belongs to most of our region's State Associations in order to keep up with what's going on in the Colonies. If we don't yet belong to your Association contact Loretta so we can sign up. And, send us your newsletter so we can keep up. Following, in no particular order, are snippets we've found.

Ontario and Michigan will have a joint summer meeting July 27-28 in Sarnia. For more information contact Pat Westlake, Ontario Beekeepers' Association, 519.565.2622, FAX 519.565.5452, info@ontariobee.com. Check for more details on their website – www.ontariobee.com

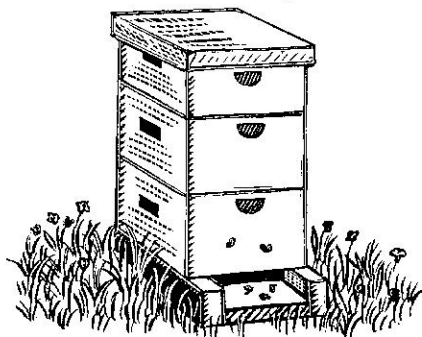
Introductory Beekeeping Course April 28-29 at University of Guelph Apiculture Field Laboratory. The cost is \$175 which includes lunch. This course is limited to 24. Instructors include Gard Otis, Paul Kelly, Doug McRory and others. For registration or additional information contact Paul Kelly, Dept. of Environmental Biology, University of Guelph, Guelph ON N1G 2W1, 519.824.4120, ext. 3472, FAX 519.837.0442, pgkelly@evb.uoguelph.ca

Beekeeping Short Courses at Delaware Valley College in Coylestown, PA, June 22-24, 8:30 a.m. to 4:00 p.m. This summer course includes the most pertinent aspects of beekeeping under the direction of Dr. Bob Berthold and Gary Bradshaw. For information contact "Bees", Delaware Valley College, 700 E. Butler Ave., Doylestown, PA 18901 or call Bob Berthold 215.489.2285.

Ohio State Beekeeper's Association will hold their Summer meeting in Springfield, OH, June 22-23. Watch for further details. For information contact Kim Flottum, 623 W. Liberty St., Medina, OH 44256, 330.722.2021.

Not listed? Not mentioned? Send a note to the Editor, Kathy Summers, 432 Baxter St., Medina, OH 44256. *Bee* part of the Colonies next time!

**Please send your state
or local newsletters to
the Editor. Let us keep
up with what's going
on in EAS territory.**



2001 Society Board of Directors

ALABAMA

Margie Smith 2003
3280 Salco Road
Churchula, AL 36521
334.675.9129
beesmith@zebra.net

CONNECTICUT

Becky Jones 2002
55 Wolf Pit Road
Farmington, CT 06032
860.677.9391
t.c.jones@snet.net

DELAWARE

John Tulloch 2003
POB 473
Odessa, DE 19730
302.378.1917 ph & fax
johnntulloch@hotmail.com

INDIANA

Jim Curlee 2002
RR 1, POB 10
Lakeville, IN 46536
219.289.1992

KENTUCKY

Gerald Burchett 2004
729 Rolling Meadows Road
Grands Rivers, KY 42045
270.928.4003
gbee@hcsis.net

MAINE

Rick Cooper 2002
1075 Post Road
Bowdoinham, ME 04008
207.666.5643
Honeybee@GWI.NET

MARYLAND

William Troup III 2002
10618 Honeyfield Drive
Williamsport, MD 21795
301.223.9662
beestroup@erols.com

MASSACHUSETTS

Jane Wild 2004
760 Main Street
West Newbury, MA 01985
978.462.3382
wildjane@shore.net

MICHIGAN

John Wrosch 2004
2411 Hickman Road
Ann Arbor, MI 48105
734.482.4984
jpwrosch@hotmail.com

MISSISSIPPI

Clarence Collison 2003
100 Pear Lane
Starleville, MS 39759
662.323.3868 (h)
662.325.2086 (w)
662.325.8838 (fax)
chc2@ra.msstate.edu

NEW BRUNSWICK

vacant

NEW FOUNDLAND

vacant

NEW HAMPSHIRE

Ben Chadwick 2004
HC 72, Box 116
Alton, NH 03809-9604
603.875.3544

NEW JERSEY

Ray Markley 2003
13 West Millcreek Rd.
Eastampton, NJ 08060
609.261.1638
rambeeman@aol.com

NEW YORK

Aaron Morris 2002
P.O. Box 246
Round Lake, NY 12151
518.899.6113
AMorris@uamail.albany.edu

NORTH CAROLINA

Don Hopkins 2004
381 Griffin Rd.
Snow Camp, NC 27349
919.233.8214 (w)
336.376.8250 (h)

OHIO

Dana Stahlman 2002
3075 Mann Road
Blacklick, OH 43004
614.855.1656

ONTARIO

Keith Forsyth 2001
436 Maple Avenue
Grimsby, ONT L3M 3B9
905.945.4928
ad387@hwcn.org

PENNSYLVANIA

Robert Jenereski 2001
2105 Ridge Drive
Mars, PA 16046
724.772.0985
masterbk@sunstreambees.com

PRINCE EDWARD ISL

John Burhoe 2002
Box 1114
Charlottesville, PEI C1A 7M8
902.892.8474

QUEBEC

vacant

RHODE ISLAND

Bernard Bieder 2003
140 Coldbrook Rd.
Warwick, RI 02888
401.463.8654

TENNESSEE

Marlene Thomas 2004
196 Long Road
Kingston, TN 37763
865.376.1838
glenmar@mindspring.com

VERMONT

Al Doring 2002
1134 North Gore Road
North Creek, NY 12853
518.251.2264

VIRGINIA

Robert Wellemeyer 2001
120 Mill Run Lane
Castleton, VA 22716
540.937.2175 (h)
540.347.6380 (w)
540.347.6384 (fax)
travel2@mnsinc.com

WEST VIRGINIA

Gabe Blatt 2004
3554 Haney's Br. Rd.
Huntington, WV 25704
304.429.1268 ph & fax

AAS

Michelle Mraz
P.O. Box 4326
Burlington, VT 05406-4326
802.863.0356
kurkermraz@aol.com

HISTORIAN

Richard Chapin
RR 1, Box 102A
Montrose, PA 18801
570.278.1094 ph & fax

EAS JOURNAL

Kathy Summers
432 Baxter St.
Medina, OH 44256
330.723.2783 (h)
330.725.6677, Ext. 3215 (w)
330.725.5624 (fax)
beeculture@airroot.com

MASTER BKPRS.

Nancy Troup
10618 Honeyfield Drive
Williamsport, MD 21795
301.223.9662
beestroup@erols.com

PAST CHAIRMAN

Dewey Caron
Department of Entomology
University of Delaware
Newark, DE 19717
302.831.8883
302.831.3651 (fax)
dmcaron@mindspring.com

PAST CHAIRMAN

Bob Cole
P.O. Box 220
Todd, NC 28684
910.877.1321
bobcole@skybest.com